

Stabilized Violet-blue 375 / 405 / 445 / 473/ 488 nm Lasers

High reliability High stability Single longitudinal mode Circular beam

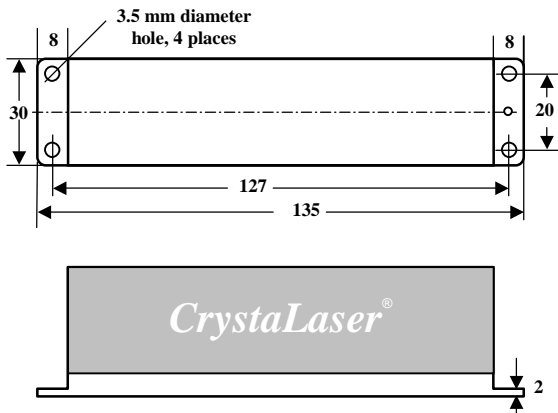
SPECIFICATIONS

Wavelength	Option ± 1 nm available	Low noise version, Model No.				SLM version, Model No.			
405 ± 5 nm *200 mW – 2W, 405 nm, 445 nm lasers listed on the bottom of this table		DL-405-120	120 mW	DL-405-020	20 mW	DL-405-050-S	50 mW	DL-405-020-S	20 mW
		DL-405-100	100 mW	DL-405-010	10 mW	DL-405-040-S	40 mW	DL-405-010-S	10 mW
		DL-405-050	50 mW	DL-405-005	5 mW	DL-405-030-S	30 mW	DL-405-005-S	5 mW
445 ± 5 nm		DL-445-050	50 mW	DL-445-025	25 mW	DL-445-030-S	30 mW	DL-445-010-S	10 mW
		DL-445-040	40 mW	DL-445-010	10 mW	DL-445-020-S	20 mW	DL-445-005-S	5 mW
375 ± 5 nm *100 - 200 mW, 375 nm laser available		DL-375-020	20 mW	DL-375-010	10 mW	DL-375-015-S	15 mW	DL-375-005-S	5 mW
		DL-375-016	16 mW	DL-375-005	5 mW	DL-375-010-S	10 mW		
473 ± 5 nm		DL-473-016	20 mW	DL-473-005	5 mW	DL-473-010-S	10 mW	DL-473-005-S	5 mW
488 ± 5 nm		DL-488-050	50 mW	DL-488-020	20 mW	473 nm laser up to 150 mW DPSS laser available			
Longitudinal mode		Multiple				Single			
Spectrum linewidth		1 nm, typical				< 0.0001 nm			
Coherence length		< 0.3 mm				> 20 meters			
Output noise (rms, 10Hz-50MHz)		< 0.5 %				< 0.5 %			
Output stability over 24 hours (rms)		< 1 %; Option: ultra-stable version <0.25%				2 %			
Modulation options		TTL 200Hz, 50kHz, 20MHz, 100 MHz, 200MHz; Analog control, Analog modulation				TTL on/off option			
Transverse mode		Circular beam, close to TEM ₀₀ , M ² = 1.1 - 1.3							
Beam diameter (1/e ²)		1.1 mm Option: 0.8 mm beam with 0.9 mrad divergence							
Beam divergence		0.6 mrad							
Beam pointing stability		< 0.005 mrad/°C							
Polarization ratio		100:1; Vertical linear polarization							
Operation temperature		5 °C to 40 °C, internal TEC temperature-stabilized, no additional heat sink required							
Warm-up time		< 30 seconds							
Operation voltage		90-250 VAC or 12VDC OEM version 11-16VDC							
Dimensions and weight of laser head		3 x 3.6 x 13.5 cm ³ (1.2 x 1.4 x 5.3 in ³), 0.3 kg (0.6 lb)							
Dimensions and weight of power supply		Standard AC: 5 x 14 x 15 cm ³ (2 x 5.5 x 6 in ³), 0.5 kg (1 lb); CL-2005 power display AC: 5 x 16 x 15 cm ³ 12 VDC OEM version: Integrated inside the laser head.							
* DL-405-1W/2W and DL-445-1W/2W		405 nm or 445 nm, 1 W or 2W, 200 μ m to 400 μ m fiber coupled output							
* DL-405-200 and DL-405-500		406 ± 4 nm, 200 mW or 500 mW; Beam 1.5x2.2 mm, Beam divergence 1.2 mrad, M ² = 3							
* DL-445-400/800 or DL-375-100/200		446 ± 4 nm, 400, 800 mW ; 375 ± 4 nm 100, 200 mW; Beam 1.5x2.2 mm; Divergence 1.2 mrad, M ² = 3							

Applications: Holographics, Flow cytometry, Fluorescence, Confocal microscopy, Raman Spectroscopy

Fiber coupling option: Single mode and multi-mode fiber delivery.

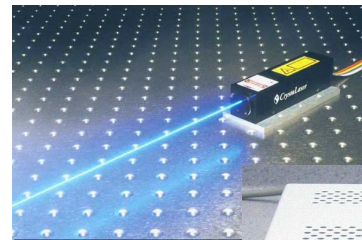
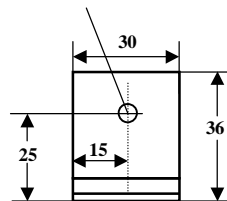
CL-2005 power supply option: Power adjustable and power digital display.



All dimensions in mm

Front View

Laser beam is output from this aperture



Made in the USA