

compact infrared tunable cw laser

IR-Point 820 - 970



new

Standard Features

- diffraction-limited beam
- turn-key operation
- low power consumption
- maintenance-free

Optional Features

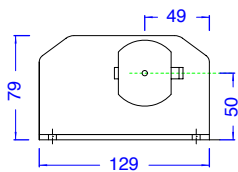
- fiber coupled output
 - ultra-low noise
-
- substitute for Ti:sapphire lasers
 - compact
 - no water cooling needed
-

Specifications⁽¹⁾	IR-Point
Wavelength	820 - 970 nm
CW power @ 860 nm	> 100 mW
Beam diameter (1/e ²)	0.8 mm
horizontal	0.8 mm
vertical	0.8 mm
Beam divergence*	2.5 mrad
horizontal	2.5 mrad
vertical	2.5 mrad
Spatial mode	TEM ₀₀
Beam quality, M ²	< 1.1
Power Noise ⁽²⁾ : RMS (10 Hz-10 MHz)	< 0.5 %
RIN (10 Hz-10 MHz)	< -110 dB/Hz
Power stability ⁽³⁾ (p-p, 2h)	< 1 %
Pointing stability (p-p, 2h)	< 30 μrad
Polarization, linear	> 100 : 1, vertical
Warm-up time (from standby)	5 min
Operating ambient temperature	18 - 30 °C
Power consumption	< 60 W
Line voltage (auto switching)	100 - 250 VAC, 50 - 60 Hz

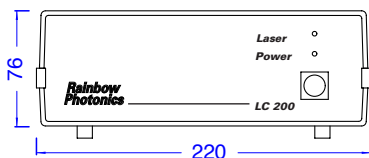
⁽¹⁾ Specifications are subject to change without notice.

⁽²⁾ For ambient temperature changes <2°C over 2 hours.

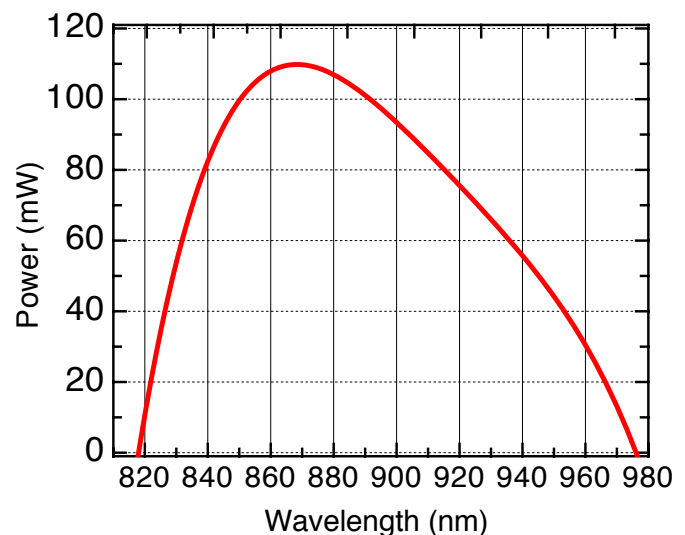
Laser head (dimensions in mm
length 240 mm)



Power supply (dimensions in mm
length 270 mm)



Tuning range



Rainbow Photonics AG

Technoparkstrasse 1
CH-8005 Zürich

Phone: +41 1 445 2030

Fax: +41 1 445 2031

E-mail: info@rainbowphotonics.com

Web: www.rainbowphotonics.com

