

Stabilized Compact 505/ 515 / 520 nm CrystaLaser®

High reliability High stability Single longitudinal mode Circular beam

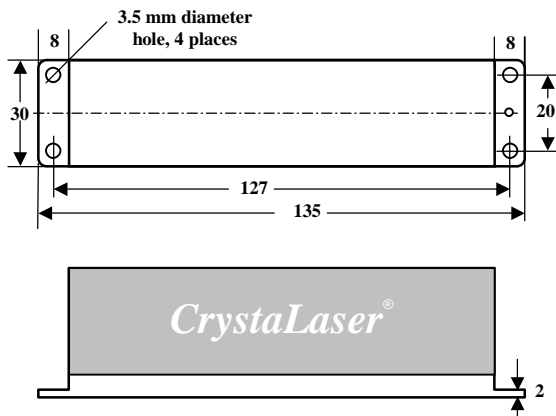
SPECIFICATIONS

Wavelength	Option ± 1 nm available	Low noise version, Model No.				SLM version, Model No.			
505 ± 3 nm		DL505-040	40 mW	DL505-025	25 mW	DL505-025-S	25 mW	DL505-015-S	15 mW
515 ± 3 nm		DL515-120	120 mW	DL515-050	50 mW	DL515-070-S	70 mW	DL515-025-S	25 mW
		DL515-100	100 mW	DL515-035	35 mW	DL515-040-S	40 mW		
		DL515-070	70 mW	DL515-025	25 mW				
520 ± 3 nm		DL520-100	100 mW	DL520-050	50 mW	DL520-070-S	70 mW	DL520-025-S	25 mW
		DL520-070	70 mW	DL520-025	25 mW	DL520-040-S	40 mW		
520 ± 5 nm	Multiple transverse mode	DL520-1W0	1 W			DL520-500-N	500 mW	Narrow line width 0.1nm	
Longitudinal mode		Multiple				Single			
Spectrum linewidth		1 nm, typical				< 0.0001 nm or < 20 MHz			
Coherence length		< 0.3 mm				> 10 meters or > 100 meters option			
Output noise (rms, 10Hz-50MHz)		< 0.5 %				< 0.5 %			
Output stability over 24 hours (rms)		< 1 %; Option: ultra-stable version < 0.25%				2 % Option: ultra-stable version < 0.5%			
Modulation options		TTL 200Hz, 50kHz, 20MHz, 100 MHz, 200MHz; Analog control, Analog modulation				TTL on/off option			
Transverse mode		Circular beam, close to TEM ₀₀ , M ² = 1.1 - 1.3							
Beam diameter (1/e ²)		1.1 mm		Option: 0.7X - 3X laser beam expanders are available to change beam size and divergence. e.g. 0.8 mm beam with 1.1 mrad divergence; or 2.0 mm beam with 0.44 mrad divergence					
Beam divergence		0.8 mrad							
Beam pointing stability		< 0.005 mrad/°C							
Polarization ratio		100:1; Vertical linear polarization							
Operation temperature		5 °C to 40 °C, internal TEC temperature-stabilized, no additional heat sink required							
Warm-up time		< 30 seconds							
Operation voltage		90-250 VAC or 12VDC OEM version 11-16VDC							
Dimensions and weight of laser head		3 x 3.6 x 13.5 cm ³ (1.2 x 1.4 x 5.3 in ³), 0.3 kg (0.6 lb)							
Dimensions and weight of power supply		Standard AC: 5 x 14 x 15 cm ³ (2 x 5.5 x 6 in ³), 0.5 kg (1 lb); CL-2005 power display AC: 5 x 16 x 15 cm ³ 12 VDC OEM version: Integrated inside the laser head.							

Applications: Holographics, Flow cytometry, Fluorescence, Confocal microscopy, Raman Spectroscopy

Fiber coupling option: Single mode and multi-mode fiber delivery.

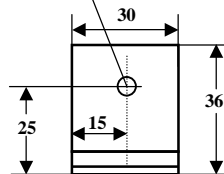
CL-2005 power supply option: Power adjustable and power digital display.



All dimensions in mm

Front View

Laser beam is output from this aperture



Made in the USA